

Kingsley Ibezim

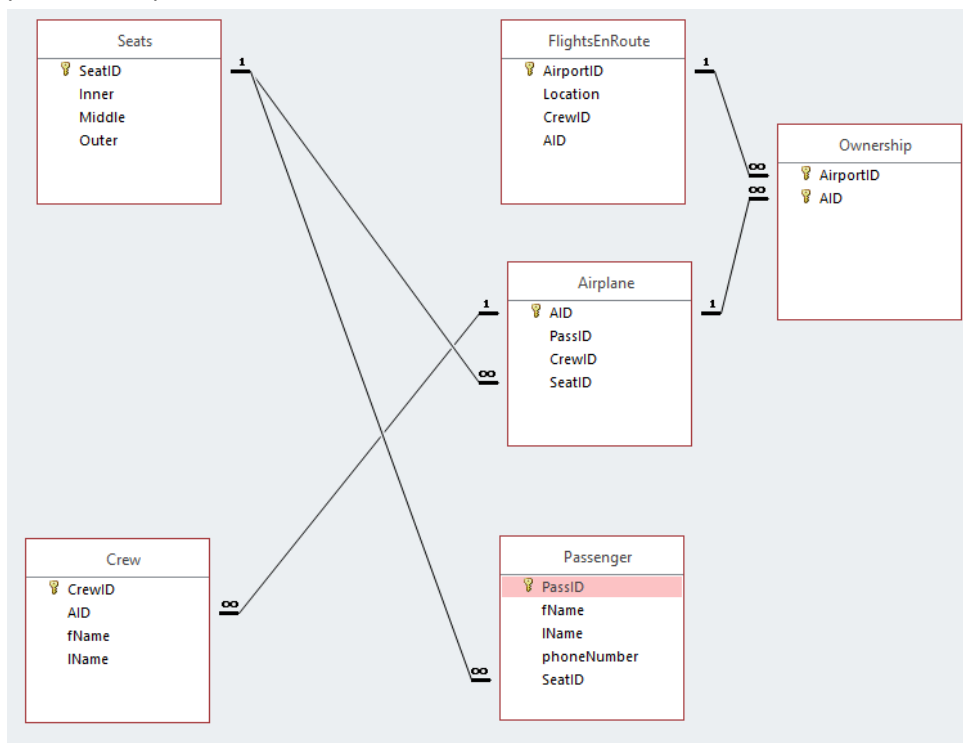
ISC 110

Access Database Project

Airplane Database

This project was made for us to create our own database. There is a link below for you to view my database personally. When I created this database, the names that you see are made up. The creation of this database seemed to be simple and straightforward, but they are actually quite challenging and difficult to understand if they are not mapped out correctly. I went through multiple ideas on how I can create a project so simple enough yet challenging to configure to suffice with the requirements. The people named in this database are not real people nor are the phone numbers that provided.

When I began this project on my final idea, I created five tables that contained information for the database. These are *Airplane*, *Crew*, *FlightsEnRoute*, *Passenger*, and *Seats*. Later on in the project I created *Ownership*. The Airplane ID or AID, gave a number that assigned it to the Crew Members of the Flight. This stayed as a primary key, but everything within the database, always went back to the AID. I created multiple foreign keys within the Airplane table which correlated with the other tables that had the same information within it. The purpose of this was to see which crew members are going to which location, which passenger is assigned to the flight, and who owns the plane that is being flown. Below is a copy of my relationships.



Link to my database: <http://www.cs.oswego.edu/~kibezim/coursework/isc110/AirplaneDatabase.accdb>